

Surrey SLI CEN



Our next Clinical Excellence Network (CEN) Meeting is on the 12th of May 2015.



The CEN will be held at Moor House School and College, Mill Lane, Oxted, Surrey, RH8 9AQ and will run from 13:00 – 16:00.

www.moorhouseschool.co.uk

12th May 2015 CEN Agenda

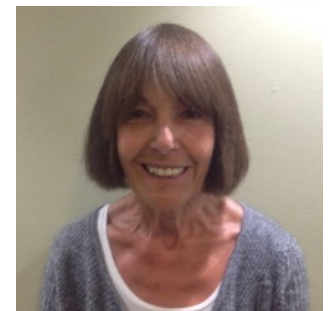
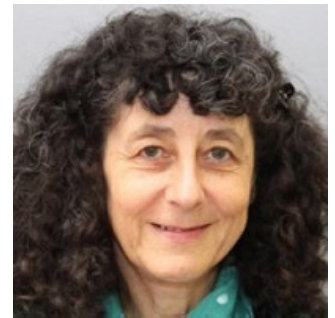
Professor Shula Chiat (top right) and Professor Penny Roy (bottom right) will present their findings on a study of language in socioeconomically disadvantaged preschool children.

After the presentation, CEN members will work together to discuss their own experiences related to the study findings. There will then be an opportunity to problem solve together.

If you would like to read some information on the study before attending the CEN, please see the following papers;

<http://theconversation.com/preschool-attendance-boosts-language-in-disadvantaged-children-36174>

http://www.nuffieldfoundation.org/sites/default/files/files/Language%20and%20Socio-economic%20Disadvantage%20Briefing%20Paper_3.pdf



Please remember to follow us on Twitter @SurreySLICEN for up to date CEN announcements and SLI news.

To book your place for the next CEN meeting, please confirm your attendance by emailing Lucy Nicoll on info@moorhouseschool.co.uk